

SAUK COUNTY HISTORICAL MUSEUM

SEARCH AND LEARN



Each picture is of something in the Museum. Can you find the object in each picture? Remember, look up, and look down! (Once you find each item, put a check in the box.)



I was kept shiny by the servants and brought out in the afternoon at tea time.

Can you find me?



A radio? Yes! This was how people listened to stories and music.

Can you find it?



If you didn't have a radio, you might have had one of these to play music.

Can you find it?



Before TV and iPods, people entertained themselves by playing me. Do you know what I am? _____

Can you find me?



Sometimes people used animals like this for decoration. Would you like me in your living room?

Do you see me?



People always like to know what time it is. Do I look like the clocks in your house.

Can you find me?

You might have one of these, but does it look like this? →

Can you find it?



I used to be inside the house of one of the Ringling brothers. I held up a fireplace mantle.

Can you find me?



Can you guess what this is?
It's for a baby! This one fit
on momma's back. Now
they are made "frontwards."

Can you find it?

I'm in a place with a
lot of my friends.

Can you pick me out?



Is this a bucket? Well, it is kind of a
bucket. They were easy to make, but
they didn't last very long.

Can you find it?



Many years ago people called fur traders used
furs for money.

Can you find these?



A very long time ago, Native Americans built
mounds of earth in different shapes.

What shape was this dirt? _____

Can you find it?

There were four bathrooms in this house.

How many do you have in your house?

Can you find this bathtub?



I am an old-fashioned school desk.
Now I am on display behind the glass.

Can you find me?



I was a little girl's favorite doll, and now I am here so you can see how pretty I am.

Can you find me?

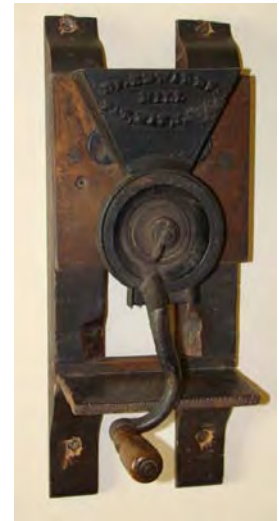
Would you give me a name? _____

There are some unusual things hanging on the walls in the kitchen. Here are two of them. Do you know what they were used for?



Did you find this?

What is it?



How about this?

What do you think it is?



Here are some things that need to be kept cold. People would put big chunks of ice in the back of this box.

So, what do you think this early refrigerator was called? _____

Did you find it?

Before there was gas and electricity, you had to cook on a stove like this one that was heated with either wood or coal.

Do you see it?



Now you are at the end of your search through the Museum.

Did you have fun?

What did you like the best? _____

OOPS! Almost forgot the last thing . . . People still put these on their houses today, just like when this house was built.



We hope you enjoyed your visit!